



Cromwell Road, Ellesmere Port, CH65

£1,395 PCM

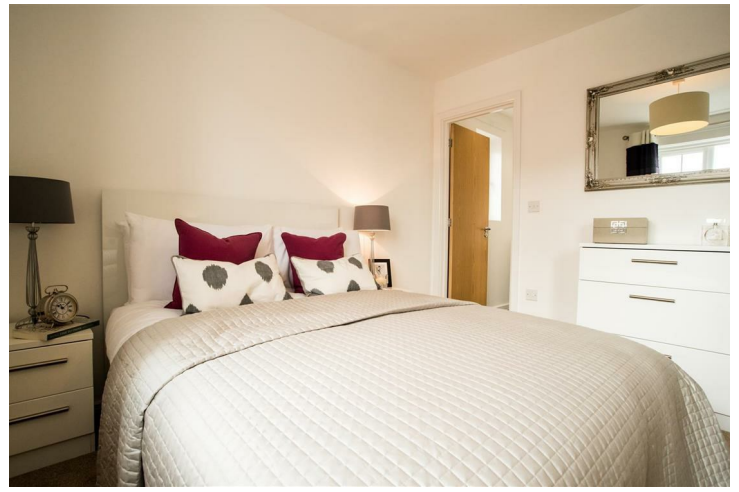
Welcome to Cromwell Road, located in Ellesmere Port, Cromwell Road is an impressive new development of 98 desirable family homes, 6 miles from Chester town centre. Cromwell Road offers a wide range of amenities and transport links, making it the perfect location for families and couples.

Delightful. That's the Dee. Inside this beautiful four bedroom home, the ground floor offers a large living room designed for comfort and relaxation. Go down the hallway past the WC and storage space, and you're straight into the gorgeous kitchen/dining area with its integrated appliances and contemporary units. Lovely French windows open straight out onto your own private garden. Ideal for enjoying the sunshine and a bit of outdoor dining and entertaining.

Upstairs, you'll find two double bedrooms including the master bedroom with built-in-wardrobes and en-suite bathroom plus two single rooms, and a gorgeous family sized bathroom fitted out in stylish white. Built to high standards, the Dee offers plenty of security with a fitted alarm system and Secure by Design windows and doors.

Deposit £1700
Council Tax B
Unfurnished
Available 23rd January 2026





Key Features

- Private driveway
- Security alarm system
- Dishwasher
- Washing/drying machine
- Patio area in the private back garden
- Secure-By-Design windows and doors
- Fitted wardrobes to master bedroom
- Fridge freezer
- Oven and hob
- Light caramel carpet up the stairs and in the bedrooms

Location

